



Samee the Glorious Treasure

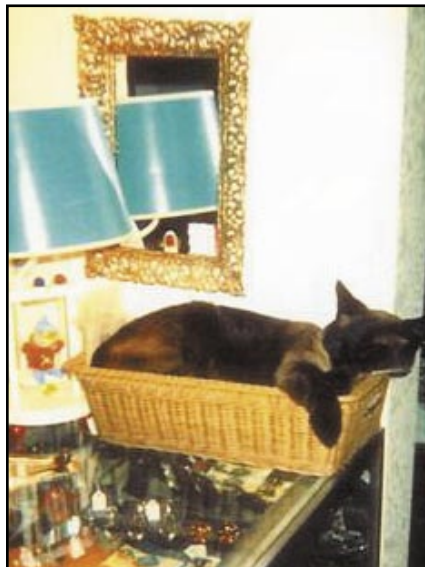
By Linda Wilson

Samee is an older cat, a beautiful Chocolate Point Siamese with bright blue eyes. She arrived at the shelter plagued by traumas known only to her. On guard at all times, she swatted and glared, and one by one put the volunteers in their place. She hated being in the kennel so we allowed her to roam freely. She established her throne on the top of the stainless towers, far away from our reach. It was a battle to get her to go in her cubby at night. She merely tolerated us and showed no signs of allowing us into her world.

We listed Samee on the petfinder.org web site with the rest of the adoptable cats and kittens. It was our hope that a kind and patient person would give her the time and attention she needed to overcome her protective and somewhat nasty disposition. We expected to have a long wait.

Samee was an untouchable beauty. Nearly every prospective adopter was drawn into her aura. She was regal & elegant and her allure was obvious, but alas, she meted out a right hook that kept all at bay. That is, until her Fairy God Mother, Gloria Allison spotted Her Majesty in all her splendor resting peacefully in her cubby. Allison saw a Sleeping

Beauty, the fairest of them all. Without hesitation, she opened the kennel door and leaned in and proclaimed, "You must come home with me!" Samee leapt to her feet and rubbed her whiskers against Allison's face. A home of castle proportions awaited her. She left that very night.



Gloria Allison is the owner of Glorious Treasures, an antiques and collectibles store in Edmonds on Main Street. Samee now rules from high atop a show case filled with jewels and rarities. She holds court with the resident Dachshund and Yorkie. The bejeweled Queen is greeted daily by a faithful following of treasure seekers and friends. Oh, yeah, that wicked right hook? It disappeared along with the loneliness and fear. She lives happily-ever-after in warmth, safety and in the Kingdom of Hearts. The End.

Note: At the time of this writing Glorious Treasure lost their lease and are looking to relocate.

What we will buy this month!

- Combo Test - \$700
- Spay/Neuter - \$1000
- Vaccines - \$250
- Vitamins - \$200
- Flea Management - \$500
- Antibiotics - \$350
- Dry Food - \$620
- Specialty Foods - \$72
- Litter pellets - \$325
- Paper Towels - \$96
- Disposable Gloves - \$112
- Laundry Detergent - \$104
- Ultra Bleach - \$23
- Litter Pans - \$32
- Solid Waste Fee - \$180
- Payroll - \$4700

We need your support, please donate today!

on the web:
www.whiskercity.com

phone:
206.250.3898

mail donations to:
PO Box 77214
Seattle, WA 98177

If you wish to be removed from the mailing list, call 206-533-1423 and leave your name.



“Whatever you have done to the least fortunate you have done unto me.”

Like you, I love animals, all animals. If it were possible I would spend every waking moment cuddling, kissing and playing with these amazing creatures. I am intrigued by their innate ability to trust humans when so many have been failed by our choices.

Whisker City would not exist if it were not for the human condition. Community services are developed around the 4 D's: death, dying, divorce, disease. It is understandable that when faced with these life-altering circumstances that people must make the choice that is best for their human families. Add to these traumas; moving, allergies, mental illness, bankruptcy, job loss, spousal & child abuse, and blatant disregard for life, it is clear that the need for animal rescue, housing and placement will always exist. Many gains have been made in the animal rescue world. Greater awareness for spaying and neutering, reduced euthanasia, humane education, and altering our diets, has saved many animal lives and brought great joy to our families. But even with these gains, animals are still cast aside to be cared for by those of us with the heart and desire to do so.

Whisker City is part of the fabric of the rescue community and the need for our service continues to grow. It is our intention to shape our work around the attitudes and habits of the human population. For instance, we know people do not like typical shelter environments. They feel sad & overwhelmed by the smells & sounds and appearance. Plus many shelters are inconveniently located and underfunded. In response to this reality, we launched Whiskers on Wheels, our mobile adoption center. We bring pets to the people in a cheerful traveling school bus.

With your help, we will continue to adapt to society's demands. Thank you for your support and please keep us in your hearts and keep giving. Every dollar advances your mission to make our community a safe haven for the least fortunate.

April Brown, Executive Director

So--you thought you'd heard it all... Reasons people get rid of their pet.

“...he wakes me up in the middle of the night with his snoring.”

“...my boyfriend is allergic to cats.”

“...I thought her fur would be fluffier.”

“...he won't stay off the cupboards.”

“...I'm tired of hair all over the place.”

And this months Winner!

“...he poops in his litter box and we want him to go outside.”

Whisker City Contacts

Donations: Mike at 206-533-1423

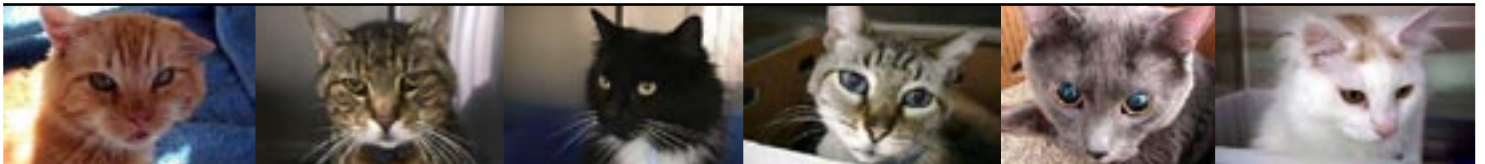
Volunteering: Juliette_decarteret@aoncons.com or 206-467-4653

Adoptions: Michelle at michellekg@qwest.net

Relinquishments: Brenda at 206-250-3898

Corporate Funds and Grants: April at 206-542-9617

Yard Sales & Crafts Fairs: Linda at 425-778-1742





The Long Journey Home

They louder they purr the deeper they sink into the soft pile of cotton and down. Tiny little feet open and curl with the rattling.

Memories stir of a friend long ago that talked in sweet whispers as they sleep in her arms. Tonight, gentle, younger hands glide along their coats of glistening fur and strange new aromas fill the air. Johnny and Tysha are home, this time for good.

Johnny and Tysha came to us after their owner died. We took them in with a promise to keep them together. For more than a year we cared for the sweet cats

as prospective owners came and went. A few asked to adopt one or the other and each time we questioned whether we should

keep our vow. We reasoned that one could be sleeping in a bed that night surrounded by the undivided attention they both deserved. But we resisted the nagging guilt and kept Johnny and Tysha together as promised.

During the first month of our Whiskers on Wheels Homes for the Holidays tour, Johnny and Tysha were adopted. The journey ended as it had begun -- safely back in the arms of a lov-

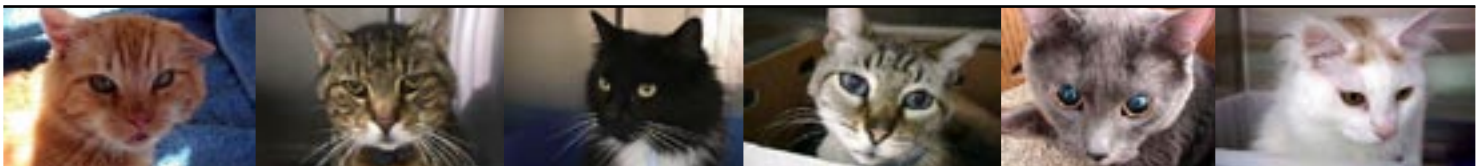
ing family, falling asleep to soft, comforting whispers.



Number of adoptions since the launch of Whiskers on Wheels:

58

Please visit www.whiskercity.com and check out the WOW calendar to see when we are going to be in your neighborhood. We need your support to keep this one of a kind mobile adoption center on the road. Stop on by and tell all your friends!





Combo Test for Feline Aids and Leukemia

In an effort to provide the best possible care, Whisker City will begin mandatory testing for Feline Aids and Leukemia. It will add another \$10 to the costs associated with preparing a cat for adoption. The following Q & A explains how the combo test is administered and what can be expected from the test and diagnosis.

Q. What Is a FeLV and FIV Test?

A. The feline leukemia (FeLV) and FIV test is a blood test used to detect exposure to or infection of one of these viruses. The feline leukemia test is often called the “Feleuk” test or abbreviated as FeLV test. The feline immunodeficiency virus test is also referred to as the FIV test or feline “AIDS” test. These tests can be run individually but are most commonly run together.

FeLV and FIV should be run on all cats with any concurrent illness or if a recent FeLV/FIV status has not been established. This test is also recommended on any new cat that is coming into the household.

There are no real contraindications to performing this test. Negative results help determine health or exclude disease.

Q. What Does a Feline Leukemia and Feline “AIDS” Test Reveal?

A. Cats not infected or exposed to these viruses will be negative.

The feline leukemia test is a blood test that detects antigens to the virus. Two different tests are commonly used, the ELISA (enzyme linked immunosorbent assay) and the IFA (immunofluorescent antibody test). The ELISA test requires blood, saliva or tears and is commonly performed in most veterinary offices. The test is often combined as a feline leukemia and feline immunodeficiency virus test kit. The IFA test is often used to confirm a positive ELISA result and is sent to a qualified diagnostic laboratory. The IFA test requires a blood or bone marrow sample.

The feline immunodeficiency virus test is a blood test that detects antibodies to the virus. Three different tests can be used, the ELISA, IFA and the Western blot. As mentioned, the ELISA test requires a blood sample and is commonly performed in most veterinary offices. The IFA or Western blot tests are often used to confirm a positive ELISA test and are sent to a qualified diagnostic laboratory.

Healthy cats should not be euthanized based on one positive leukemia test result. There are several contingencies in interpretation of this test that make it complicated. Healthy cats that test positive should be isolated from other cats in the household and retested in 3 months. Exposure to the virus does not necessarily mean that the cat will become infected with the virus.

Q. How Is a Feline Leukemia and Feline “AIDS” Virus Test Done?

A. Feline leukemia and feline “AIDS” virus testing involves obtaining a blood sample.

After drawing a blood sample, the blood is immediately placed in a glass container with a substance that prevents clotting of the sample. A specific amount of blood is combined with a chemical and this combination is placed on a commercially available feline leukemia and feline “AIDS” test. The fluid spreads across filter paper impregnated with specific antigens and antibodies. A positive result will be indicated by a color change or line developing at a set point on the paper. This test works under the same principle as at-home pregnancy tests for women.

Most veterinary hospitals have the kits and instruments to perform a feline leukemia and feline “AIDS” virus test in their hospital although some veterinarians prefer to send the blood to an outside laboratory for analysis.

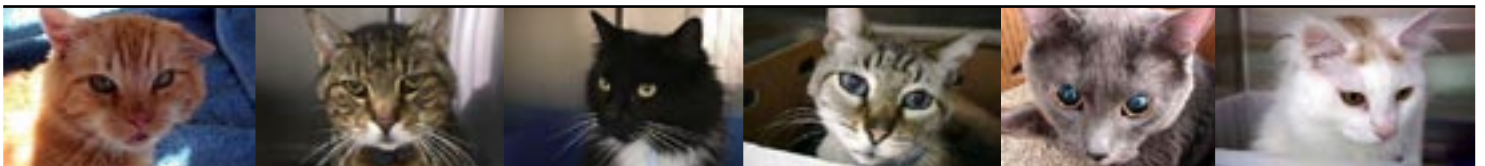
The ELISA test generally takes 10 to 20 minutes to perform. The IFA is sent to a veterinary diagnostic laboratory and takes 1 to 2 days to obtain results.

Q. Is a Feline Leukemia and Feline “AIDS” Virus Test Painful?

A. A feline leukemia and feline “AIDS” test is a blood test. In order to obtain a blood sample, a needle must be passed through the skin and into a blood vessel. As with humans, the pain involved regarding a needle will vary from individual to individual but is no more painful than any injection.

Q. Is Sedation or Anesthesia Needed for a Feline Leukemia and Feline “AIDS” Virus Test?

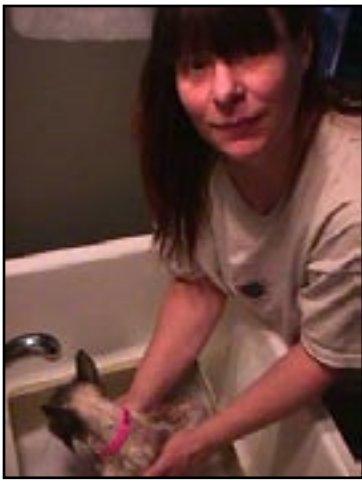
A. Sedation or anesthesia is not needed for a feline leukemia and feline “AIDS” test.



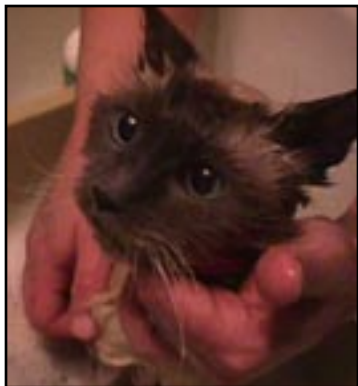


Employee Spotlight

We are thrilled to announce that Melissa Keller is joining our growing staff at Whisker City. She is responsible for daily cat care procedures at the facility and for Whiskers on Wheels. Melissa joins Brenda Anderson, who is responsible for feline health and operating WOW. We need to expand to 4 employees this year.



Melissa giving Missy a bath



Missy is not quite sure she enjoys this!

Adopt the Shelter for a Month



We are asking for “Corporate Sponsors” to financially support the operating expenses for Whisker City for one month at \$10,000. Please take the time to share our work with your place of employment and community service clubs. Whisker City’s Director, April Brown, will follow-up with a presentation at your request. You can contact her at 206-542-9617.

... Because it’s the right thing to do

Volunteers Wanted!

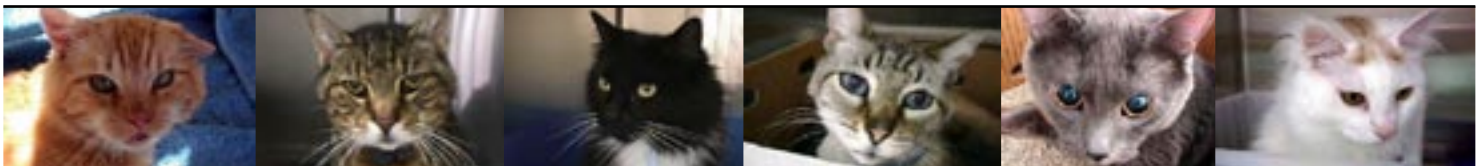
The Whiskers on Wheels mobile adoption center is in need of volunteers to act as ambassadors during hours of operation. We are looking for responsible adults that enjoy talking to people. Younger volunteers are invited if they are accompanied by an adult during volunteer time.

The WOW Calendar can be viewed at www.whiskercity.com.

Please contact Juliette at Juliette_decarteret@aoncons.com for more information.



The interest in Whiskers on Wheels is growing around Seattle





Chamber Champs Wanted

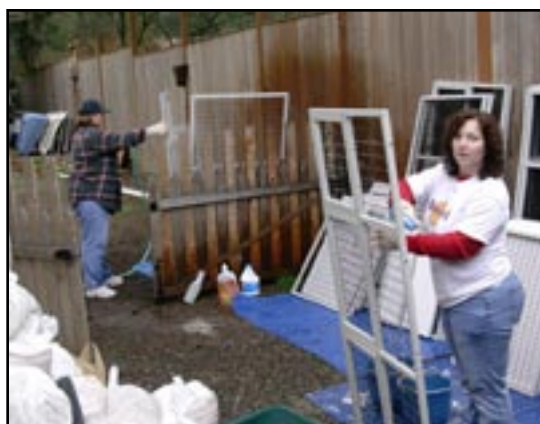
Would you like to sponsor a membership for Whisker City to one of the Chambers of Commerce listed below? These memberships will afford us the opportunity to apply for funding for the Whiskers on Wheels WOW mobile adoption center and give us access to talented business owners and volunteers.

- Everett Area Chamber - \$325
- Federal Way Chamber - \$300
- Greater Kirkland Chamber - \$150
- Greater Renton Chamber - \$300
- Greater Seattle Chamber - \$375
- Woodinville Chamber - \$300

Become a Chamber Champ and call Mike Brown at 206-533-1423 to make a tax deductible contribution.

Thank You Best Friends!!

A big Thank You to the crew from *The Best Friends Brigade* who came to Whisker City and spear-headed a major Bus cleaning for the Whiskers on Wheels vehicle. Here are some photos from that day. To find out more about Best Friends, visit www.bestfriends.org



Items for Sale

Check out great items like these available on the Whiskers on Wheels bus at one of the upcoming appearances. These items were lovingly made by our Whisker City Volunteers!

(Left: Slader shows off his new fancy collar. Right: An assortment of the collars and catnip mice)

